

Driver Access and Fleet Management System

Driver Access Control & Pre-Operational Check

The Smartcard Driver Access Control interface allows you to control which drivers can operate which vehicles and when. Very often, you can use the same card or fob that you may already be using in your business. You can ensure that only those qualified to use particular vehicles are allowed access, even down to which department they are allowed to work. In addition, the system

monitors the various licences and expiry dates against each driver, ensuring that only drivers with valid licences can use the vehicles and provide alert messages to management and drivers to enable timely retraining to be planned. You may also wish to opt for a more secure "Chip & Pin" control.

The system also provides a full Pre-Operational Check to help you meet your Health & Safety objectives and reduce costs. This may be our entry level vehicle specific check list or the enhanced customisable version allowing you to define your own check list questions. Whichever option you decide upon, it's fully automatic and requires the vehicle check to be carried out before allowing the driver to operate it. You can also decide when you require the Pre-Operational check to be carried out, e.g. start of shift, each change of driver, etc. If a defect is identified, then you have the option to decide on warning only or put the vehicle "Off Road" (VOR). This is backed up by email or message alerts to the relevant engineers or managers.

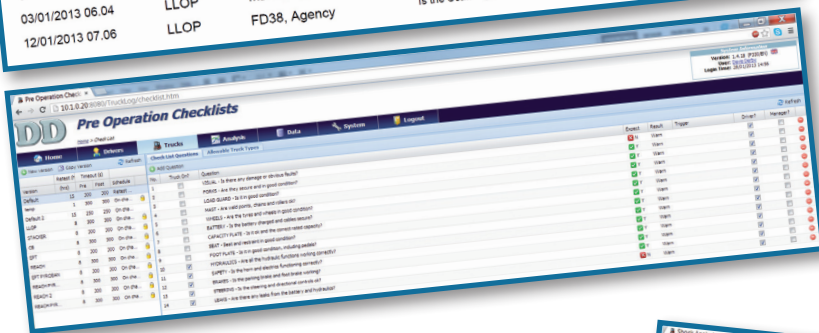


CheckList Failures
Printed 28/01/2013 15:49

Start Date 30-Dec-2012
End Date 29-Jan-2013

Truck	Truck 01	OP	Question
Date/Time	Version	Driver	
15/01/2013 06:05	LLOP	Switala, Agency F14	Is the Battery catch intact and engaged?
24/01/2013 06:05	LLOP	MD15, Agency	Are the tyres worn or damaged?

Truck	Truck 03	OP	Question
Date/Time	Version	Driver	
03/01/2013 06:04	LLOP	MD15, Agency	Is the Scanner damaged in any way?
03/01/2013 06:04	LLOP	MD15, Agency	Are there any cracks or distortion in the forks?
12/01/2013 07:06	LLOP	FD38, Agency	Is the Scaff tag present and date valid?



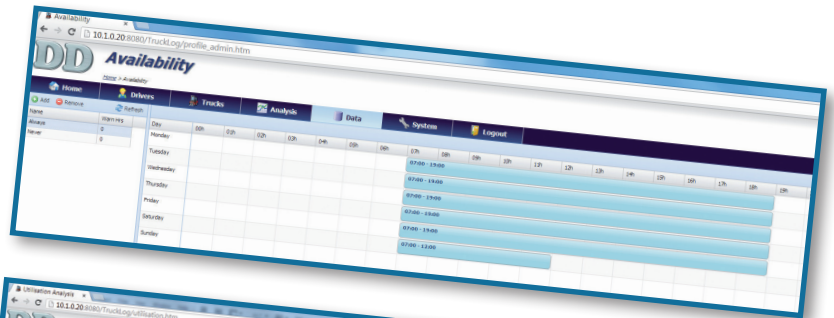
Shock & Damage

This optional system is an easy, simple to use and the most cost effective solution to help you reduce your damage costs. Being able to remotely set adjustable shock thresholds within the 3-axis shock module, you are able to monitor and record exactly what's happening to your vehicles and ensure improved driver accountability. Being able to identify who, what, where and when damage is occurring, you are then able to introduce the necessary actions to reduce this cost, whether this is driver training, repairing floors or improving driver routes. There are additional options available with this system which includes visual/audible alarms, creep speed and lock-out. Again, this can all be backed up by email or message alerts.



Utilisation

It's critical for fleets to demonstrate a return on investment through improved efficiencies and control of costs. Our web enabled reporting software helps you to deliver this by optimising the fleet and manpower requirements, comparing analysis of drivers and vehicles and monitoring critical vehicle events. This may start with remotely scheduling the availability of your vehicles. This means that you can control when your Standby, Back-up, by the hour and Core fleet can be used to suit your operation. These schedules are extremely flexible and can be changed and sent to your vehicles to reflect changing operational requirements whilst giving you the control on your costs. Because we monitor key vehicle and driver data, it means that we can provide all the key information that you need to manage your fleet. We also provide exception messages (Recent Alerts & Recent Events) straight to your home page to ensure that you are aware of situations when they occur.

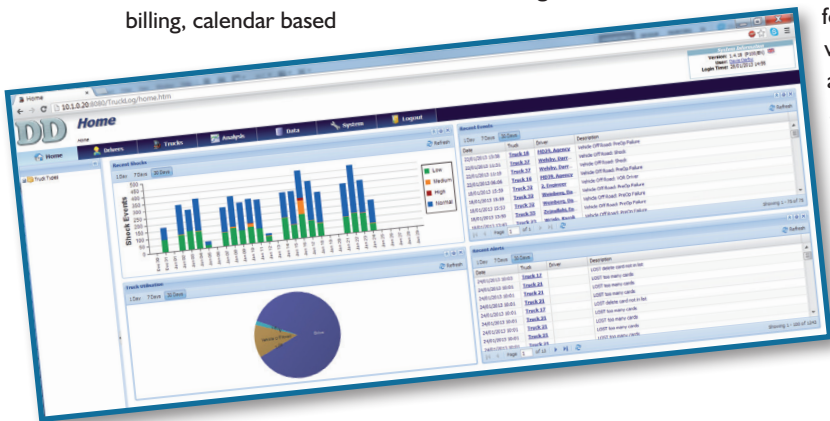


Fleet Management

The Trucklog TK5 system is designed to provide you with all the information that you need to manage your vehicles and drivers, but only when you need it. This can include Hour Meter data to enable vehicle servicing and billing, calendar based

Servicing and Thorough examination, Automatic Lost Card management, local & remote VOR and Two-way messaging.

The system is available in 2 versions, one an ambient temperature version and the other is a Cold Store/Arduous environment version. We offer Multi-language options for both our Smartcard Reader Display and our EVO web based software. Additional option modules are available, including extra I/O, shock & GPS. Again, as an option, we are able to control the speed of your vehicles within particular zones of your operation to help improve the overall site safety.



Davis Derby Limited
 Chequers Lane · Derby · England · DE21 6AW
 Telephone +44 (0)1332 227517 · Fax +44 (0)1332 227530
 E-mail: trucklog@davisderby.com · Website: www.davisderby.com



Davis Derby is a world leader in the design, manufacture and installation of fork lift truck access control and fleet management systems